

The Hampshire Stand First Floor

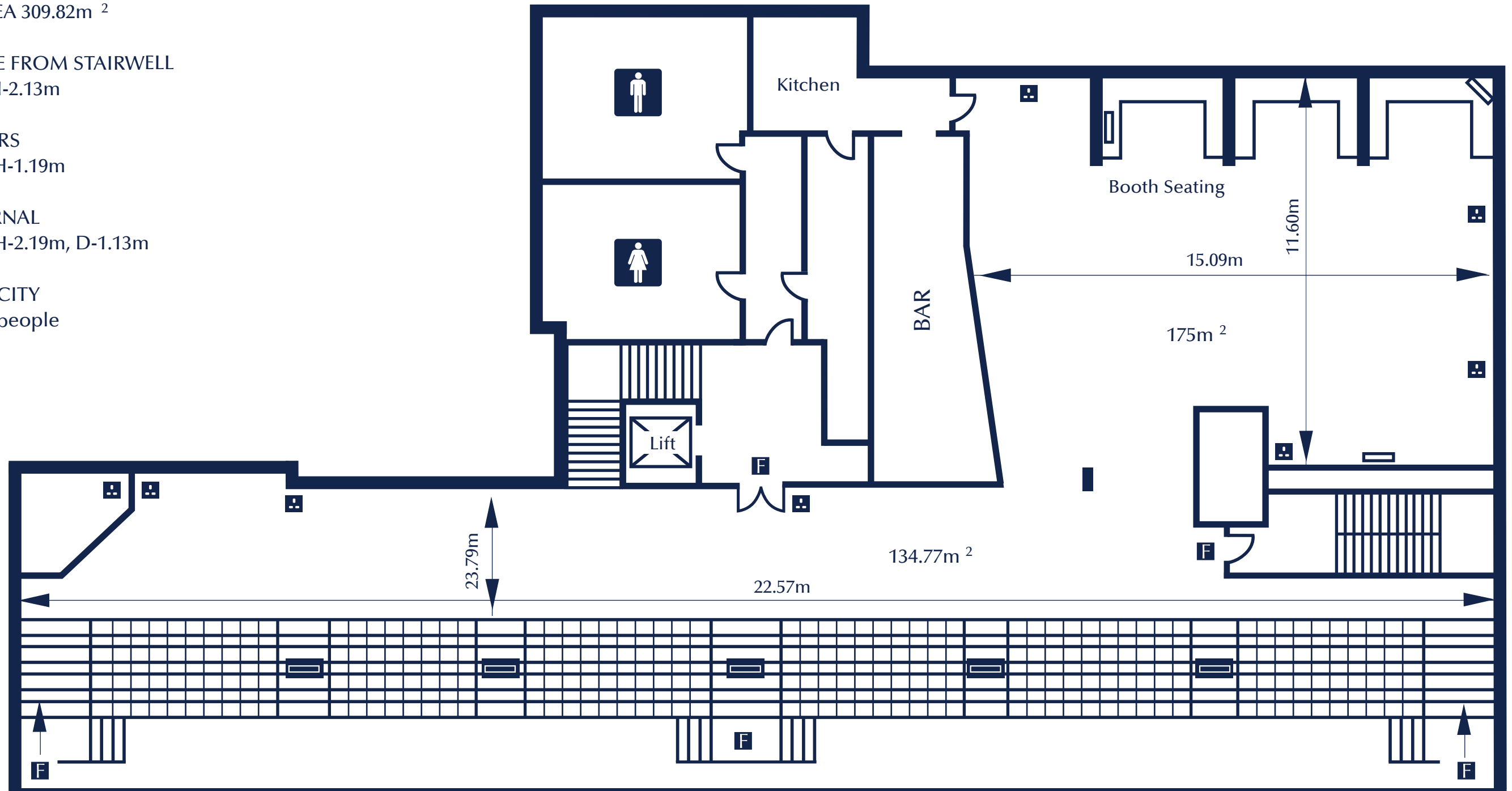
CEILING HEIGHT MIN: 2.38m
CEILING HEIGHT MAX: 2.9-m
TOTAL AREA 309.82m²

ENTRANCE FROM STAIRWELL
W-1.43m H-2.13m






LIFT DOORS
W-1.07m, H-1.19m

LIFT INTERNAL
W-1.51m, H-2.19m, D-1.13m

LIFT CAPACITY
1000kg 13 people



KEY

-  Power Points
-  Toilets
-  3 Phase Power 63 or 32 Amp
-  VDU
-  Fire Doors

RACECOURSE